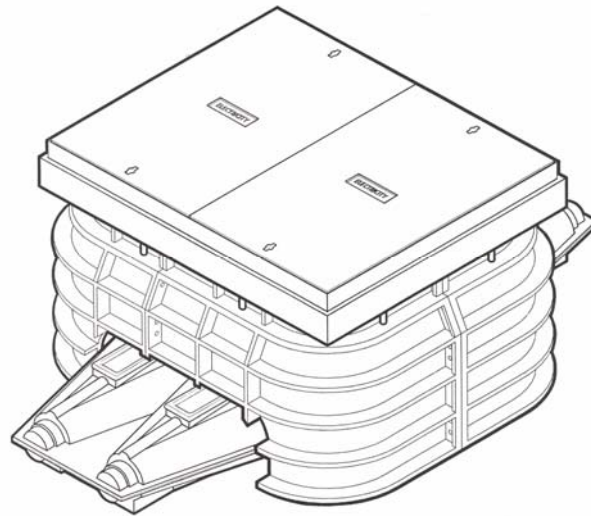


**LVD/FLB/4/3C—LV 4-WAY UNDERGROUND LINK BOX (INSULATED)**



**Application**

LV 4 Way Underground Link Box (800 Amp Rated) for 70-300mm<sup>2</sup> 3 core CNE cable.

**Features**

- An all insulated 4 Way Link Box complete with height adjustable Grade B (12½ ton) pavement access assembly.
- High Density Polyethelene (HDPE) pavement access chamber supplied as standard eliminating the need for brick built constructions.
- The factory assembled and insulated turret will accommodate solid or fused (83mm crs) links to BS88.
- Traditional insulated cast iron bell cover for reliable protection against water ingress (1 mtr head).
- Provision of approved neutral test facility and also generation/fault location connection point within the insulated turret.
- All the required phase (al.alloy) and neutral/earth (cu. alloy) mechanical connectors are factory fitted and utilise the shear-head bolt technology to ensure consistent and reliable performance.
- Resin is not supplied, however, all sealing accessories are provided for the 'encapsulation' of the joint.

**Product Testing**

- ER C81/3 : Type Approval Tests for joints for 600/1000V cable systems  
Report N°: TTR/205 (Heat Shock/Thermal Load).
- BS EN 60947 Pt 1 : Low Voltage Switchgear and Control Gear  
Section 8.3.3.5 : Making and breaking capacities  
Report N°: TTR/210

**Conversion Kit**

- 4 Core Cable: Ref - LVD/FLB/4/CK
  - self assembly earth busbar with associated mechanical connectors

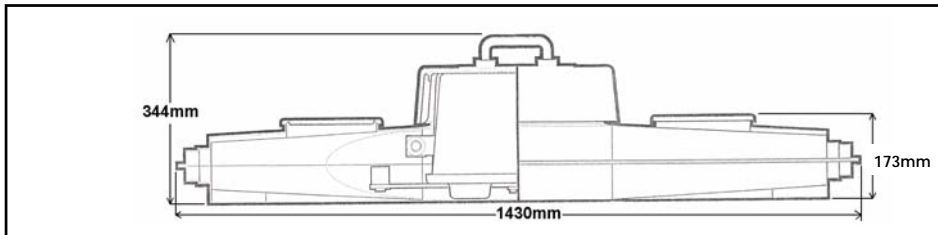
**Accessories**

- External Earth: Ref - LVD/FLB/4/EK
  - 70mm<sup>2</sup> earth bond assembly with associated bracketry, etc.
- Fuse Carriers: Part N° - 50097
- Solid Links: Part N° - 50093

**LVD/FLB/4/3C**

**Product Features/Physical Dimensions**

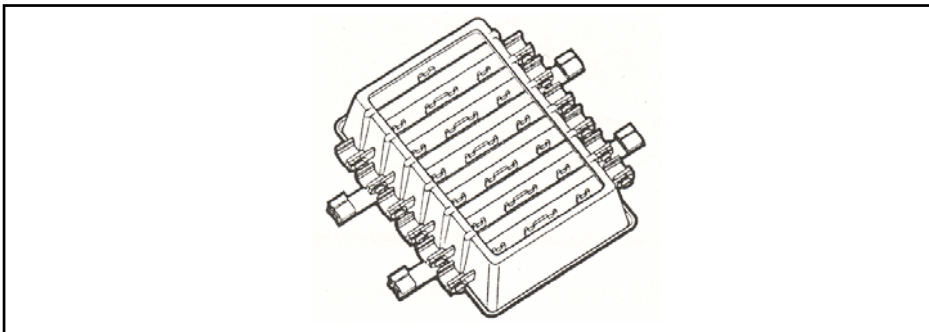
**- Link Box Unit Assembly**



**Resin Volume**

- 60 litres

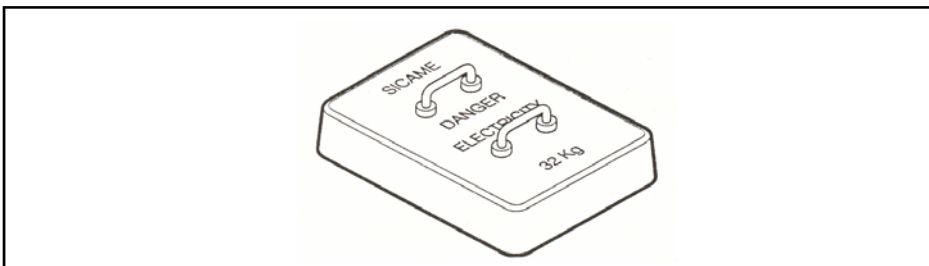
**- Insulated Turret Assembly**



**Turret**

- Hi-Heat ABS (110°C temp withstand)
- 50 kg

**- Bell Cover (Insulated - Optional)**



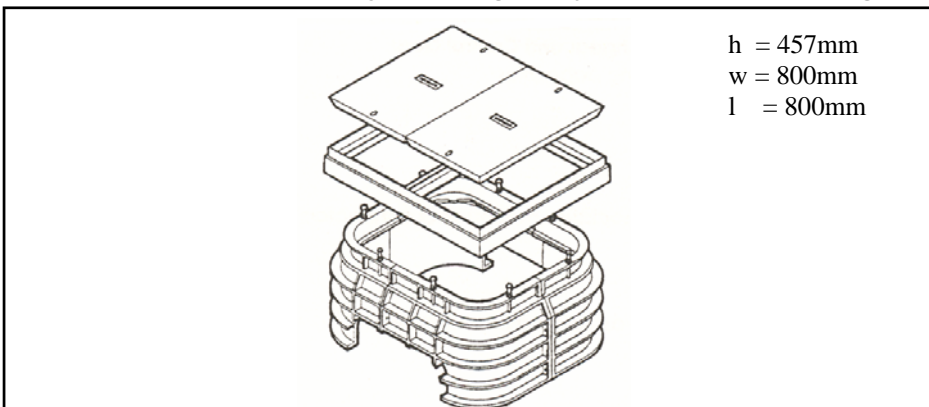
**Weight**

- 32 kg

**Material**

- Cast Iron

**- Access Chamber Assembly (inc height adjustment and levelling kit)**



**Manhole Covers 2-off**

- Galvanised steel tray (concrete filled) 29 kg each
- Galvanised steel frame (including cross arm) 13 kg

**Access Chamber**

- High Density Polyethelene HDPE 14 kg